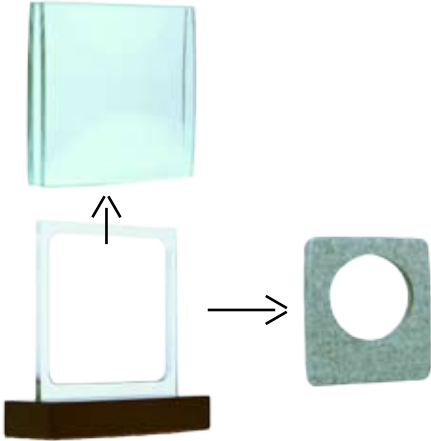


**Attention - the coin can easily be scratched!**

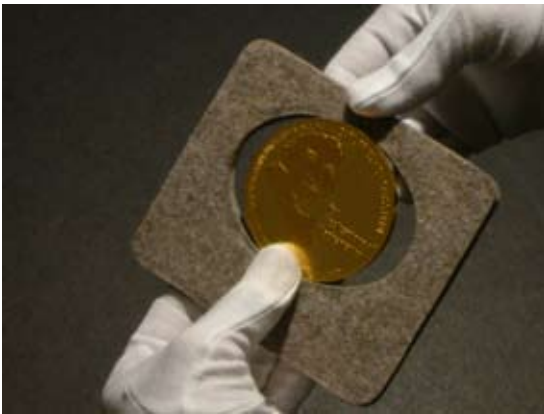
Use soft cotton gloves for jewellers to handle the coin.  
Only touch the borders.



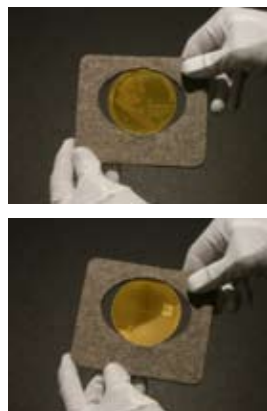
Lift the cap, push the felt inset out of the glass frame.

In regard to the natural material felt and the tension which is needed to hold the coin in position, it is possible that one side of the felt is easier to access. This means it makes a difference from which side you try to press in the coin and pull over the felt.

Felt is stubborn. Be patient if it doesn't work immediately.



Place the coin in the oval cut-out. Hold its position within your thumb and index finger. At the upper part of the coin press with the thumb against the coin into the cut-out. Try to pull with the index finger the felt frame over the coin, take your time and be responsive to the material.



Play a little with the coin to position it correctly, so that vertical lines on the coin stay vertical. The felt might look sort of deranged, so flatten it with your fingers to a proper border. Attention to both sides of the coin. Return the composition in the glass frame, place the cap.

Thank you for your attention.